



**NUMBER:** 09-010-04 REV. A

**GROUP:** Engine

**DATE:** October 01, 2004

This bulletin is supplied as technical information only and is not an authorization for repair. No part of this publication may be reproduced, stored in a retrieval system, or transmitted, in any form or by any means, electronic, mechanical, photocopying, or otherwise, without written permission of DaimlerChrysler Corporation.

**THIS BULLETIN SUPERSEDES TECHNICAL SERVICE BULLETIN 09-010-04, DATED MARCH 16, 2004, WHICH SHOULD BE REMOVED FROM YOUR FILES. ALL REVISIONS ARE HIGHLIGHTED WITH **\*\*ASTERISKS\*\*** AND INCLUDE THE ADDITION OF THE 2005 MODEL YEAR.**

***SUBJECT:***

4.0L Engine - Dirt And Debris Accumulation At Rear Main Seal

***OVERVIEW:***

This bulletin involves the application of a small amount of sealer where the top of the transmission bellhousing mates to the engine.

***MODELS:***

**\*\*1997 - 2005\*\*** (TJ) Wrangler

**NOTE: **\*\*This bulletin applies to vehicles equipped with a 4.0L engine (sales code ERH) and a manual transmission (sales code DDQ, DDD, or DEH) that were built prior to September 02, 2004 (MDH 0902XX).**\*\***

***SYMPTOM/CONDITION:***

The customer may experience engine oil seepage from the area of the rear main bearing seal. Closer inspection may reveal that the cause of the engine oil seepage past the rear main bearing seal is due to the accumulation of dirt and debris around the outside of the rear main seal. This condition may occur more frequently if the vehicle is used in off road conditions.

A spacer plate is used to mate the transmission bellhousing to the back of the engine. The spacer plate has a slot machined into it at the 12 o'clock position. A small opening may occur as a result of the spacer slot when the spacer is mated between the engine and transmission bellhousing. The narrow spacer opening at the top of the transmission bellhousing may allow small size debris to enter the bellhousing and accumulate around the outside of the rear main engine seal. If debris accumulation becomes significant, damage to the rear main seal may occur.

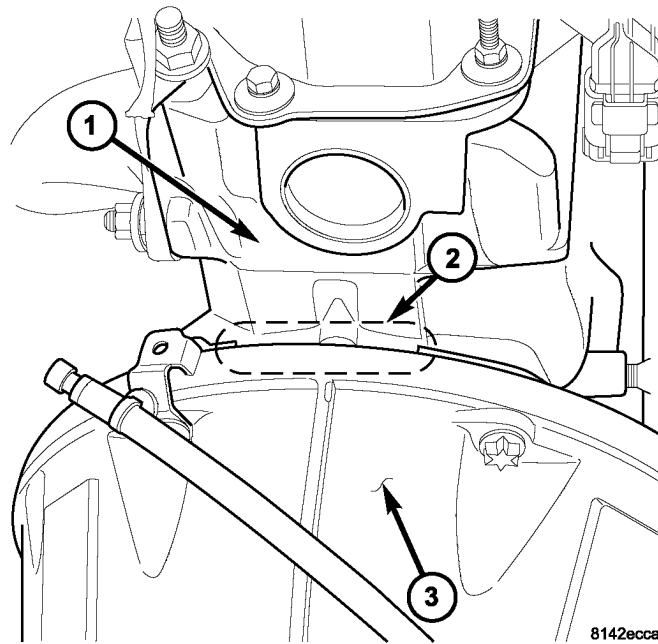
***DIAGNOSIS:***

If a vehicle is in for service perform the Repair Procedure if the repair has not previously performed.

If engine oil seepage from the engine rear main oil seal is present, then diagnosis and repair not addressed by this Bulletin may be required.

**PARTS REQUIRED:**

Qty.	Part No.	Description
AR (1)	04883971	RTV, Engine Sealant Note: There is sufficient quantity of RTV to perform numerous repairs.
AR (1)	04897156AA	Cleaner, Throttle Body Note: There is sufficient quantity of Cleaner to perform numerous repairs.

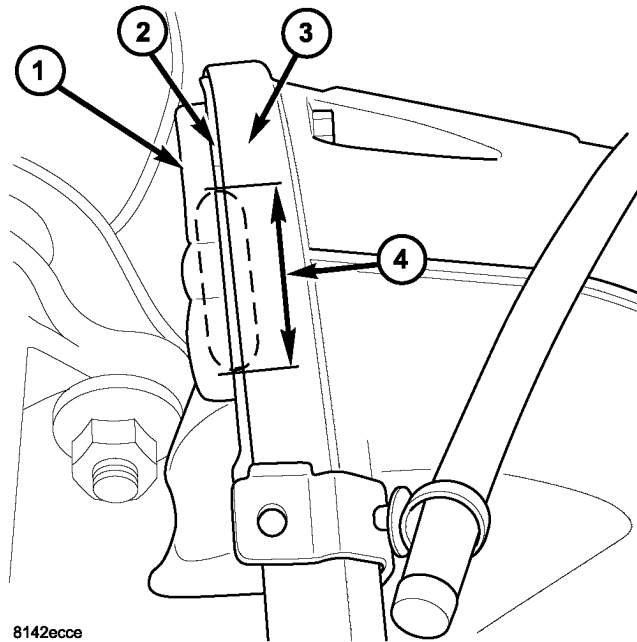
**REPAIR PROCEDURE:****Fig. 1 LOCATION OF ADAPTER OPENING**

1 - BACK OF ENGINE

2 - LOCATION OF NARROW OPENING DUE TO SLOT IN ADAPTER PLATE

3 - TOP OF BELLHOUSING - MANUAL TRANSMISSION

1. With the ignition switch in the off position, raise the vehicle hood and make sure the engine and exhaust manifold are not hot to the touch ([Fig. 1](#)).
2. Locate the narrow opening created by the spacer plate. The spacer opening can be viewed when looking towards the rear of the engine and top of the transmission bellhousing from the drivers side of the engine ([Fig. 2](#)).
3. Thoroughly clean the immediate area around the spacer opening with throttle body cleaner, p/n 04897156AA. Allow cleaner to dry.
4. Apply a sufficient amount of RTV over the spacer opening. Verify that the spacer opening is completely sealed off by the RTV.
5. Lower and secure vehicle hood.



**Fig. 2 ADAPTER OPENING DETAIL**

- 1 - BACK OF ENGINE
- 2 - ADAPTER PLATE
- 3- BELLHOUSING - MANUAL TRANSMISSION
- 4 - ADAPTER PLATE OPENING - APPLY SEALER HERE

**POLICY:**

Reimbursable within the provisions of the warranty.

**TIME ALLOWANCE:**

Labor Operation No:	Description	Amount
06-10-01-90	Bellhousing, Apply Sealer	0.3 Hrs.

**FAILURE CODE:**

AM	Authorized Modification
----	-------------------------