

2 0 0 4

JEEP[®] ACCESSORIES

BY MOPAR



W R A N G L E R

Jeep® Accessories by Mopar are original equipment accessories, from the accessories and parts division of DaimlerChrysler Motors Company, LLC. Designed by an engineering team

ACCESSORIZING YOUR JEEP WRANGLER

that knows your Wrangler inside and out, they install, fit and perform with unmatched precision. And when you purchase your accessories at the time of vehicle purchase, you'll get a strong 3-year/36,000-mile limited warranty honored at every Jeep dealership across the country (see back cover for additional details).

You'll find Jeep Accessory Packages to accommodate most any lifestyle. Of course, you can purchase any accessory in this catalog separately, as well. For pricing and more information on any Jeep Accessories by Mopar, visit mopar.com or see your local Jeep dealer.

FOR MORE INFORMATION visitmopar.com

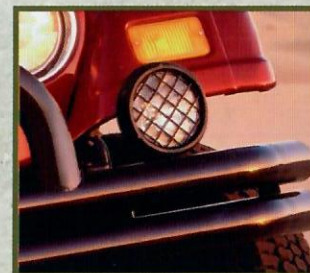


ADVENTURE PACKAGE

- Tubular Front Bumper
- Tubular Rear Bumper
- Fog Lights
- Tubular Light Bar
- Off-Road or Low-Profile Lights (2 pair)



Tubular Front and Rear Bumpers* are constructed of rugged 3-inch diameter mandrel-bent tubing so you and your Wrangler can stand up to the forces of nature. Bumpers match the contours of Wrangler's body perfectly. Also available in Chrome steel and Black aluminum.



The 6-inch round **Fog Lights†** undercut inclement weather and minimize glare. Lights feature the production switch, wire connectors and wiring harness. Available in Black and Chrome. Black impact-resistant lens covers sold separately.



The **Tubular Light Bar*** installs directly on the windshield frame and includes mounting tabs for the **Off-Road** (shown) and **Low-Profile Lights†**. Bar will not affect the operation of Mopar's Soft Top. Off-Road and Low-Profile Lights† provide a consistent, accurately aimed light. They're available for the Light Bar in 6.5-inch round (shown) or low-profile 4x8-inch and 5x9-inch rectangular styles. Include impact-resistant lens cover, illuminated instrument panel switch and four lamps. (Low-Profile Lights: late availability, October 2003)

SUBTLE IT AIN'T

The Adventure Package

When it's all about potholes, portaging or climbing treacherous terrain, you want accessories that are capable of taking charge when the going gets tough. Look no further than the **Adventure Package**, featuring mandrel-bent Tubular Bumpers, Fog Lights with impact-resistant covers, a heavy-duty Tubular Light Bar and Off-Road or Low-Profile Lights. It's a tough-looking performance package that won't give up an inch of ground.

Also shown with Black mesh-style lens covers on Fog Lights.

*These products are designed solely to enhance the appearance of the vehicle; they are not intended to prevent injury or damage in the event of an accident.
†Check state and local regulations for restrictions on installation and use. Heavy-duty charging system required when using four lights.

PROTECTION PACKAGE

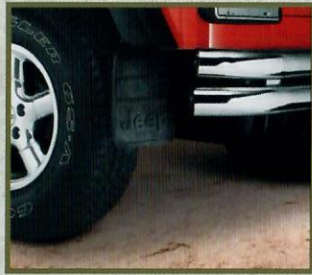
- Front Air Deflector
- Rubber Splash Guards
- Taillamp Guards
- Rocker Panel Guards
- Skid Plates
(Oil/Transmission and
Steering Gear)
- 15-inch Polished Cast
Aluminum Wheels



Also shown with Molded Side Steps
and Premium Spare Tire Cover.



The **Front Air Deflector** is made of shatter-resistant Lexan® and helps direct bugs and other road debris up and away from the hood and windshield without adversely affecting wiper or washer operations. Matching fender shields also available.



Ultra-thick **Rubber Splash Guards** provide maximum protection from gravel, salt and other road debris. "No-drill" brackets are included for easy installation. Features exclusive Jeep® logo. Sold in pairs.



High-Impact **Taillamp Guards** protect your vehicle's taillamps from damage when you head off-road. Available in Black steel and Black or Silver aluminum.



Rocker Panel Guards are heavy-duty tread plates with a durable Black powder-coat finish, protecting your Wrangler from rocks and other debris encountered while covering rough terrain. Requires removal of side steps on Sahara models.



Heavy-duty steel **Skid Plates** for the Oil/Transmission and Steering Gear help protect these underbody components when covering rough terrain.



15-inch Polished Cast Aluminum Wheels enhance the appearance of your Wrangler. All Mopar wheel centers are machined to match your vehicle's hubs exactly so they'll run true and balance easily for a smooth ride. They also undergo stringent testing to prove their durability and help ensure a long-lasting sparkle.

NO PLACE FOR WIMPS

The Protection Package

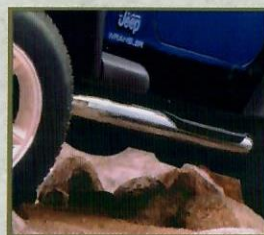
Real men are known to add a bit of stylish protection to their Trail-Tested Jeep Wrangler. A he-man favorite is the **Protection Package**, with a shatter-resistant Front Air Deflector, ultra-thick Rubber Splash Guards, high-impact Taillamp Guards, Rocker Panel Guards, heavy-duty Oil/Transmission and Steering Gear Skid Plates and 15-inch Polished Cast Aluminum Wheels. Rugged good looks included.



Front and rear **Chrome Tubular Bumpers*** match the contours of Wrangler's body perfectly. Constructed of rugged 3-inch diameter mandrel-bent tubing, they're also tough enough to stand up to the forces of nature. Also available in Black steel or Black aluminum.



Chrome Grille
Pile on the good looks by adding some extra Chrome to your Wrangler. Grille will not adversely affect engine airflow or impede the opening and closing of the hood.



Chrome Tubular Side Steps have a sturdy aluminum substructure and feature skid-resistant step pads that really come in handy in slushy, muddy and wet conditions. Also available in Black steel, as well as Silver or Black aluminum. (Not for severe off-road use.)



15-inch 5-Spoke Chrome Wheels enhance your Wrangler's appearance. All Mopar wheel centers are machined to match your vehicle's hubs exactly, so they'll run true and balance easily for a smooth ride. Chrome wheels are thoroughly tested to help ensure a long-lasting sparkle.

CHROME ACCENT PACKAGE

- Chrome Tubular Front Bumper
- Chrome Tubular Rear Bumper
- Chrome Grille
- Chrome Tubular Side Steps
- 15-inch 5-Spoke Chrome Wheels

APPEALING CAPABILITY

The Chrome Accent Package

If you're looking to enhance your Jeep® Wrangler with accessories that take a shine to treacherous terrain, the Chrome Accent Package is just the ticket. It features tough Chrome Tubular Bumpers, a corrosion-resistant Chrome Grille, Chrome Tubular Side Steps and precision-machined 15-inch 5-Spoke Chrome Wheels that stand up to and stand out in any adventure.

*These products are designed solely to enhance the appearance of the vehicle; they are not intended to prevent injury or damage in the event of an accident.



The **Center Console** features an armrest for the driver and front passenger, open storage trays and lockable storage compartment. Drink holders securely hold soda cans and bottles for front and rear passengers.



Custom-fit **Slush Mats** are heavy-vinyl mats which feature deep grooves to help prevent water, snow and mud from spilling onto the floor. Nibbed backing with driver's-side positive retention helps keep mats in place. Mats are color matched to your vehicle's interior and feature exclusive Jeep® logo. Available in pairs for front and rear.



Grab Handle/Clothes Hanger gives rear passengers a ready hand-hold and features a convenient hook for transporting clothes on a hanger.



The **Combination Kit** is composed of rear-seat-area **Tonneau Cover** with snapless attachment system; **Wind Screen** (including rear window); and durable, soft-top-material **Sun Bonnet**.



Custom-fit, water-resistant front and rear **Seat Covers** are constructed of Espuma "wet suit" material and help keep dirt and moisture off your seat surfaces. Passenger-side cover has a seatback pocket. Covers feature Jeep logo and are easily removed for cleaning.



BEAUTY IN THE BEAST

Interior Package

Even if your Jeep Wrangler is exposed to harsh outdoor elements, inside you'll stay clean, comfortable and composed. The **Interior Package** features a Center Console, Slush Mats, Grab Handle/Clothes Hanger, Combination Kit and Seat Covers, all designed to look good and perform well under extreme conditions. So go ahead and let your Wrangler get wet and wild — while you stay high and dry.

INTERIOR PACKAGE

- Center Console
- Slush Mats (front and rear)
- Grab Handle/Clothes Hanger
- Combination Kit
- Seat Covers

Also shown with 15-inch Polished Cast Aluminum Wheels, Black Tailboard Guards, and Front Air Deflector.

The Inside Track on the Latest Technologies

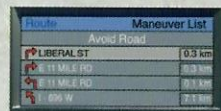
Directions and Diversions



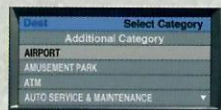
Turn-by-turn instructions



Map display



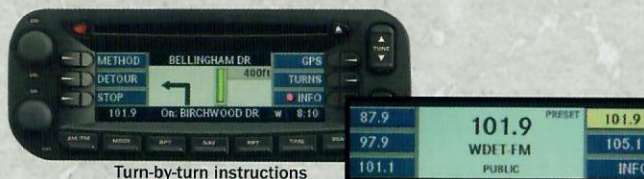
Written directions



Points-of-interest

Navigation Radio (RB1)

This sophisticated, yet simple-to-use combination DVD navigation/audio system utilizes Global Positioning System (GPS) technology, one geographic CD data disc, and onboard computing to provide you with turn-by-turn directions for the entire mapped United States and parts of Canada. Highlights include voice instruction (in English, French-Canadian or Spanish), automatic re-route calculation, full map displays, extensive points-of-interest listings and memory for storing 100 personal addresses. The unit also features a 4.2-inch color display, AM/FM Stereo, CD Player and 10 AM, 10 FM and 10 SIRIUS Satellite Radio presets*.



Turn-by-turn instructions

Channel display with descriptions.

Navigation Radio (RB4)

This navigation and audio system utilizes two geographic CD data discs for downloading turn-by-turn directions with voice instruction for the entire United States (map displays and written directions not included). Once street data is downloaded, you can play a music CD while you're following route instructions. A 4.9-inch color display, AM/FM Stereo, CD Player and 10 AM, 10 FM and 10 SIRIUS Satellite Radio presets* are also featured.



6-Disc CD Changer

Rear cargo-area-mounted changer features a silicone damping system that ensures precise tracking while virtually eliminating skips. Operates through radio's Integrated CD Changer Controls.

Superior Sound Systems

Mopar Radios

All Mopar Radios are designed to work perfectly with your vehicle's existing electrical system and integrate seamlessly with your dash. All Mopar Radios feature 66 watts of total power and generous presets.

Radio selections include:

- AM/FM Stereo Radio with Cassette, CD Player and Integrated CD Changer Controls (RBP)
- AM/FM Stereo Radio with CD Player and Integrated CD Changer Controls (RBK)



Entertainment for Everyone

SIRIUS Satellite Radio

SIRIUS Satellite Radio subscription service offers 100 streams of pure entertainment with coast-to-coast digital clarity. You'll get 60 commercial-free streams of music and 40 streams of news, sports and entertainment. It's everything from the Best of the 80's and Rock to Classic Jazz and Country, from ESPN Radio and The Weather Channel to Radio Disney and The SIRIUS Comedy Channel. With the installation of a separate Mopar receiver and permanently installed satellite antenna, any DaimlerChrysler/Mopar audio system is capable of receiving the superior digital sound resolution of SIRIUS broadcasting. Activation is free; a monthly service fee will apply. Visit mopar.com for a current stream listing.

© 2003 SIRIUS Satellite Radio Inc. Stream information is correct at time of printing. SIRIUS is available within the Continental United States.

*Requires satellite receiver kit, antenna kit, installation kit and monthly satellite radio service subscription.



Theft Protection

Security Systems

Mopar offers Security Systems that safeguard your vehicle against tampering, towing, and theft of vehicle contents. For Wranglers without power door locks, the **EVS® Base Security System** includes two transmitters to arm and disarm the alarm and a siren and starter interrupt.

EVS is a trademark of DaimlerChrysler Corporation.

There are many more Jeep® Accessories by Mopar available to enhance your



Tubular Brush Guard*

Designed to match your vehicle's front end perfectly, guards feature a rugged steel substructure. Will not adversely affect airflow to the engine compartment, impede the opening and closing of the hood or obstruct light beams. Available in Black or Chrome steel as well as Black aluminum. Not available with Tow Hooks, Tubular Bumper or Winch.

*This product is designed solely to enhance the appearance of the vehicle; it is not intended to prevent injury or damage in the event of an accident.



Front Grille Guard

Mandrel-bent guard protects lower grille from off-road debris. Corrosion-resistant finish ensures long-lasting appeal. Not applicable for Tubular Bumper.

Front-End Cover

Protect your vehicle's front end from damage caused by gravel, insects and road debris with this tough Black vinyl cover. Two-piece construction allows hood to be opened with cover in place, while floss-backing safeguards your vehicle's paint and Clear Coat finish. Screen covers grille area for added protection.



Molded Side Steps

Designed to fit the contours of your vehicle perfectly and help make entering and exiting safer and easier. Identical to the production Side Steps on the Sahara model, they feature a steel substructure and high-impact thermoplastic cladding.

Winch†

The Mopar Winch features a reversible electric motor, galvanized aircraft steel cable with clevis hook, hawse fairlead, remote control cable and a strong automatic load holding brake. Winch and winch mounts do not adversely affect airflow to the engine compartment or impede hood operation.

†Heavy-duty alternator, battery, springs and shock absorbers recommended for winch installation. Not available with Tubular Front Bumper or Tubular Brush Guard.



Front Bumper Appliqué

Rust-resistant, durable anodized aluminum appliqué features diamond plate pattern to give your Wrangler's front bumper some extra attitude.



Tow Hooks

Hooks are made of heavy-duty forged steel. Front hooks (5,000-pound capacity) mount to vehicle frame and are sold in pairs. Rear hooks (4,000-pound capacity) come in either a single hook for use with a Mopar **Hitch Receiver** or two frame-mount hooks complete with their own mounting kit.



Hitch Receiver*

Tows up to 2,000 pounds with 4.0L Power Tech I-6 engine or up to 1,000 pounds with 2.5L Power Tech I-4 engine. Can be used with production or Mopar **Tubular Bumper**. Mopar Hitch Receivers are constructed of heavy-duty steel with electrocoat primer and a Black polyester-baked top coat finish, so they'll stand up to the elements year after year. Includes Ball Mount and 1 1/2" Hitch Ball. Wiring Harness and Hitch Receiver Plug sold separately.

*Check Owner's Manual for hitch type, load capacity and heavy-duty equipment required. Trailer may require items not supplied by Mopar.



Spare Tire Bike Carrier

Mounts to spare tire and holds two bikes. Comes with a cable for locking bikes to carrier — and carrier to vehicle — and features rubber inserts in the carrying clamps to help protect bike surfaces.

Hitch-Mount Fold-Down Bike Carrier

Carries two bikes, and allows you to open and close tailgate without removing bikes from carrier. Features carrying clamps with rubber inserts to help protect bike surfaces and comes with a cable for locking bikes to carrier (lock not included) and an antitheft bolt that locks the carrier to the vehicle.



Spare Tire Ski Carrier

Mounts to spare tire and holds up to four pairs of skis. Includes cable for locking skis to carrier.



Soft Top

Features two quick-release latches that allow top to be put up or down easily. Heavy-duty seams and exclusive door-frame system minimize wind noise and water leaks. Made from a premium three-ply fabric blend.



Hard Top

The best way to get through winter. Identical to the production top; rear wiper and defroster included. Available in Black and Dark Khaki.

Sun Bonnet

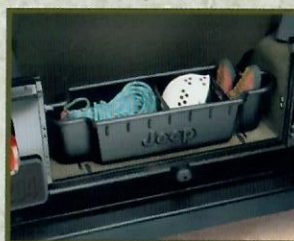
Constructed of a durable soft-top material, this unique accessory offers a breezy, open-air feel while protecting passengers from the sun. Compatible with Soft- and Hard Top-equipped vehicles. Available in Black and Dark Khaki.



Add-A-Trunk[®]

This hinged lid creates a lockable cargo space large enough for camcorders and laptop computers. Available in matching interior colors.

[®]Properly secure all cargo.



Adjustable Cargo Tray[®]

Custom fit to Wrangler's cargo area with high side walls to contain loose items. Dividers keep items from sliding. Removes easily for cleaning. Features exclusive Jeep logo.

[®]Properly secure all cargo.



Soft Top Boot

Installs easily to protect your Soft Top when it's folded down. Includes a special zippered pouch to store Soft Top windows. Available in Black and Dark Khaki.

Cab Cover

Weather-resistant nylon Cap fits snugly over your Wrangler's roll bar and windshield to help keep interior clean and dry. Includes two integrated rubber shock cords that attach to frame, preventing cover from moving in the event of wind and inclement weather.



Window Storage Bag[®]

Allows for easy storage of windows when not in use. Soft lining in each of the bag's five compartments prevents scratching.

[®]Properly secure all cargo.



Spare Tire Covers

The **Premium** cover is made of a cotton/polyester-blend with heavy-duty stitching and features an elastic anchor to securely hold the cover on the tire. They are available in a variety of unique Jeep designs. The **Deluxe** cover features a molded antitheft mount and is made of foss-backed denim fabric. The **Molded** cover is custom molded to fit specific tire sizes and is made of durable thermoplastic and vinyl. The **Hybrid** cover features a hard plastic molded face and vinyl with elastic wrap that fits securely around back of spare. All feature the Jeep logo.



Chrome Exhaust Tip

Add extra style to your Wrangler's substance. Rigorously tested for corrosion resistance to ensure long-lasting sparkle.

Molded Splash Guards

Tough Black TPO Molded Splash Guards are custom contoured to vehicle body panels for a stylish, functional appeal and maximum protection from gravel, salt and other road debris. "No-drill" brackets are included for easy installation. Feature exclusive Jeep logo on rear guards. Sold in pairs for front or rear.



Door Entry Guards

Help protect interior door sills from scratches. Embossed with the famous Jeep brand logo. Available in Stainless Steel or Black plastic.



Carpet Floor Mats

Production-style mats feature durable nylon carpet. Rubber-ribbed backing with driver's side positive retention helps keep mat in place. Color matched to vehicle interior and features Jeep logo.

JEEP WRANGLER ACCESSORY PACKAGES BY MOPAR

Adventure Package

- Tubular Front Bumper
- Tubular Rear Bumper
- Fog Lights
- Tubular Light Bar
- Off-Road or Low-Profile Lights (2 pair)

Protection Package

- Front Air Deflector
- Rubber Splash Guards
- Taillamp Guards
- Rocker Panel Guards
- Skid Plates (Oil/Transmission and Steering Gear)
- 15-inch Polished Cast Aluminum Wheels

Chrome Accent Package

- Chrome Tubular Front Bumper
- Chrome Tubular Rear Bumper
- Chrome Grille
- Chrome Tubular Side Steps
- 15-inch 5-Spoke Chrome Wheels

Interior Package

- Center Console
- Slush Mats (front and rear)
- Grab Handle/Clothes Hanger
- Combination Kit
- Seat Covers

ADDITIONAL JEEP ACCESSORIES BY MOPAR AVAILABLE FOR YOUR JEEP WRANGLER:

- | | | |
|---|-----------------------|-----------------------|
| ◦ Air Bag Locks | ◦ Locking Gas Cap | ◦ Touch-Up Paint |
| ◦ Door Edge Guards | ◦ Speed Control | ◦ Vehicle Cover |
| ◦ Hood Cover | ◦ Splash Guards, Flat | ◦ Wheel Locks |
| ◦ Jeep Sportswear | ◦ Tinted Window Kit | ◦ Windshield Sunshade |
| ◦ Lens Covers (Mesh Style)
for Fog and Off-Road Lights | | |

FOR MORE INFORMATION **visit mopar.com**

Since the time of printing, some of the information you'll find in this catalog may have been updated. The appearance of accessories shown may vary depending on vehicle application. See your dealer for the latest Mopar product information. Visit the Mopar Web site at mopar.com.



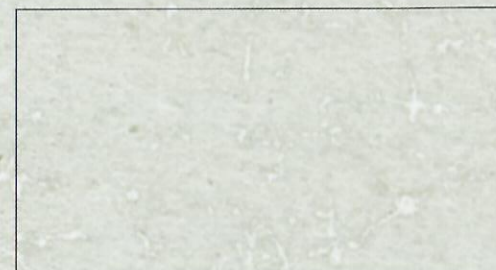
Mopar Premium Vehicle-Care Products

Mopar and Meguiar's, the premier supplier of automotive finish-care, have teamed up to bring you the finest in vehicle-care products. These high-quality products are formulated exclusively by Meguiar's and are specifically designed to help maintain, protect and enhance your vehicle. Choose from Car Wash Liquid, Cleaner Wax, Tire Treatment Gel and Finish Enhancer.



THE MOPAR WARRANTY DIFFERENCE

When installed on a DaimlerChrysler Corporation vehicle that is within the New Vehicle Limited Warranty period, Mopar Accessories are covered by either the 3-year/36,000-mile New Vehicle Limited Warranty, or the 12-month/12,000-mile Mopar Basic Limited Warranty, whichever is more favorable to you. These warranties are backed by thousands of DaimlerChrysler Motors Company, LLC dealerships throughout the country. See your dealer for full details and a copy of the limited warranties.



©2003 DaimlerChrysler Motors Company, LLC.
All rights reserved. Mopar and Jeep are registered trademarks of DaimlerChrysler Corporation.
Catalog #OOPM4076 (Quantity of 25) 09/03 180/M